



The Gaggler

Bringing You a Gaggle of News Monthly

Volume 1, Issue 2
May 2006

School Setup Page Makes Management Easy

The School Setup page can be a very powerful tool that you can use to your advantage. The School Setup page allows you to establish the default settings for the various aspects of the Gaggle system for all of the students in your school. This means any users that are added under the Default Access level will automatically be defined by the settings you have chosen on the School Setup page.

For example, if you want to start your students off with very limited Message Board access, you can set the Default Message Board Access on the School Setup page to "Class Message Boards Only." As you add students into Gaggle under the Default Access level, they would automatically have access to only class message boards. If you decide you wanted to open up the students' message board access as

the year progresses, you can change the access level on the School Setup page with one easy click. This saves you time and the hassles of having to change each student individually.

Gaggle users will only be defined by the settings on the School Setup page if they are added under the Default Access level. So what about your students that are already created? You can simply go to your User List page, select all of your students, and change their access level to "Default."

This quick and easy setup solution is just one of the many ways Gaggle tries to limit the amount of time you spend managing your Gaggle accounts. The less time you spend managing the accounts means more time utilizing them in your classroom!

Training Tips

Learn helpful tricks about the Gaggle system here.

Access to School Setup Page

Only teachers with an access level of School Administrator and above have the ability to make changes to the School Setup page. However, teachers with other access levels can still change the settings of their own students to meet the needs of their classroom.

Update Button

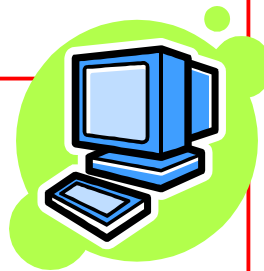
The Update button is a very important part of the School Setup page, which often gets overlooked. Whenever you make a change to the School Setup page, or any other Gaggle page, you must remember to click the Update button, or your changes will not take effect.

Curriculum Corner

Learn helpful ways to integrate technology into your daily classroom activities.

Language Arts

Use your Gaggle email as part of your weekly Language Arts grade. Writing emails can help your students improve their spelling, grammar, vocabulary, and sentence structure. Require your students to send at least three emails every week to anyone they want. Then randomly select one email from each student every week to grade for all of these components. This will also make students more aware of what they are writing in each email they send.



We often like to incorporate quotes and testimonials from Gaggle educators in our written materials. If you have a quote or story you would like to share with us, please send them to elizabethc@gaggle.net.